

# 2008 SSRAA RETURNS

Coho Release Site	Common Property			Sport	Special Harvest Area			SSRAA Brood	Cost Recovery	Other	Total
	Gillnet	Seine	Troll		Gillnet	Seine	Troll				
BURNETT INLET	8,900	200	1,000					2,100	8,600	3,000	23,800
NECK LAKE	8,000	200	1,300	10,000					19,000		38,500
ANITA BAY	8,600	200	6,400	400	3,500	200					19,300
CRYSTAL LAKE	400	0	800					1,400			2,200
HERRING COVE	5,600	1,800	10,000	2,600				2,100	13,000		35,100
NAKAT	14,400	1,000	7,500	500	1,600						25,000
NEETS BAY	32,400	6,800	71,000	11,300					70,300		191,800
% By Group	23%	3%	29%	7%	2%	0%		2%	33%	1%	100%
<b>Total</b>	<b>78,300</b>	<b>10,200</b>	<b>98,000</b>	<b>24,800</b>	<b>5,100</b>	<b>200</b>		<b>5,200</b>	<b>110,900</b>	<b>3,000</b>	<b>335,700</b>

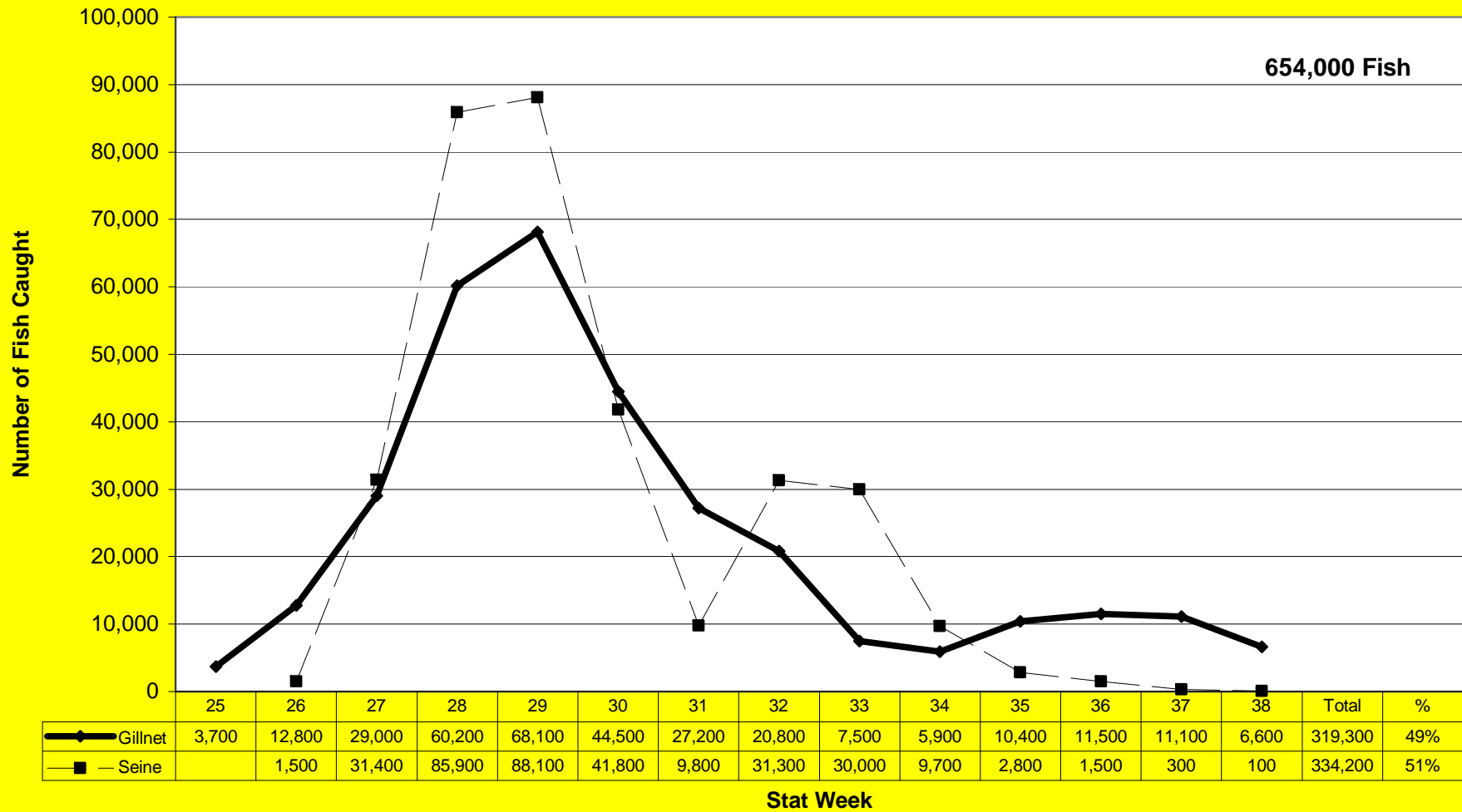
Chinook Release Site	Common Property			Sport	Special Harvest Area			SSRAA Brood	Cost Recovery	Other	Total
	Gillnet	Seine	Troll		Gillnet	Seine	Troll				
ANITA BAY	4,740		1,300	110	1,740	2,180					10,070
CRYSTAL LAKE	490		1,440	2,500				350		350	5,130
HERRING COVE	600		1,900	1,320				1,400	9,500		14,720
NEETS BAY	720		1,790	790	2,030	4,910	230		10,600		21,070
% By Group	13%		13%	5%	8%	15%	0%	4%	41%	1%	100%
<b>Total</b>	<b>6,550</b>		<b>6,430</b>	<b>2,270</b>	<b>3,770</b>	<b>7,090</b>	<b>230</b>	<b>1,750</b>	<b>20,100</b>	<b>350</b>	<b>48,540</b>

Chum Release Site	Common Property			Sport	Special Harvest Area			SSRAA Brood	Cost Recovery	Other	Total
	Gillnet	Seine	Troll		Gillnet	Seine	Troll				
ANITA BAY	61,100	24,600			28,700	45,400					159,800
NAKAT	162,700	9,600			79,700						252,000
NEETS BAY	65,200	67,100			100	200	20	182,400	653,400		968,420
KENDRICK	30,400	232,800				163,600					426,800
% By Group	18%	18%			6%	12%	0%	10%	36%		100%
<b>Total</b>	<b>319,400</b>	<b>334,100</b>			<b>108,500</b>	<b>209,200</b>	<b>20</b>	<b>182,400</b>	<b>653,400</b>		<b>1,807,020</b>

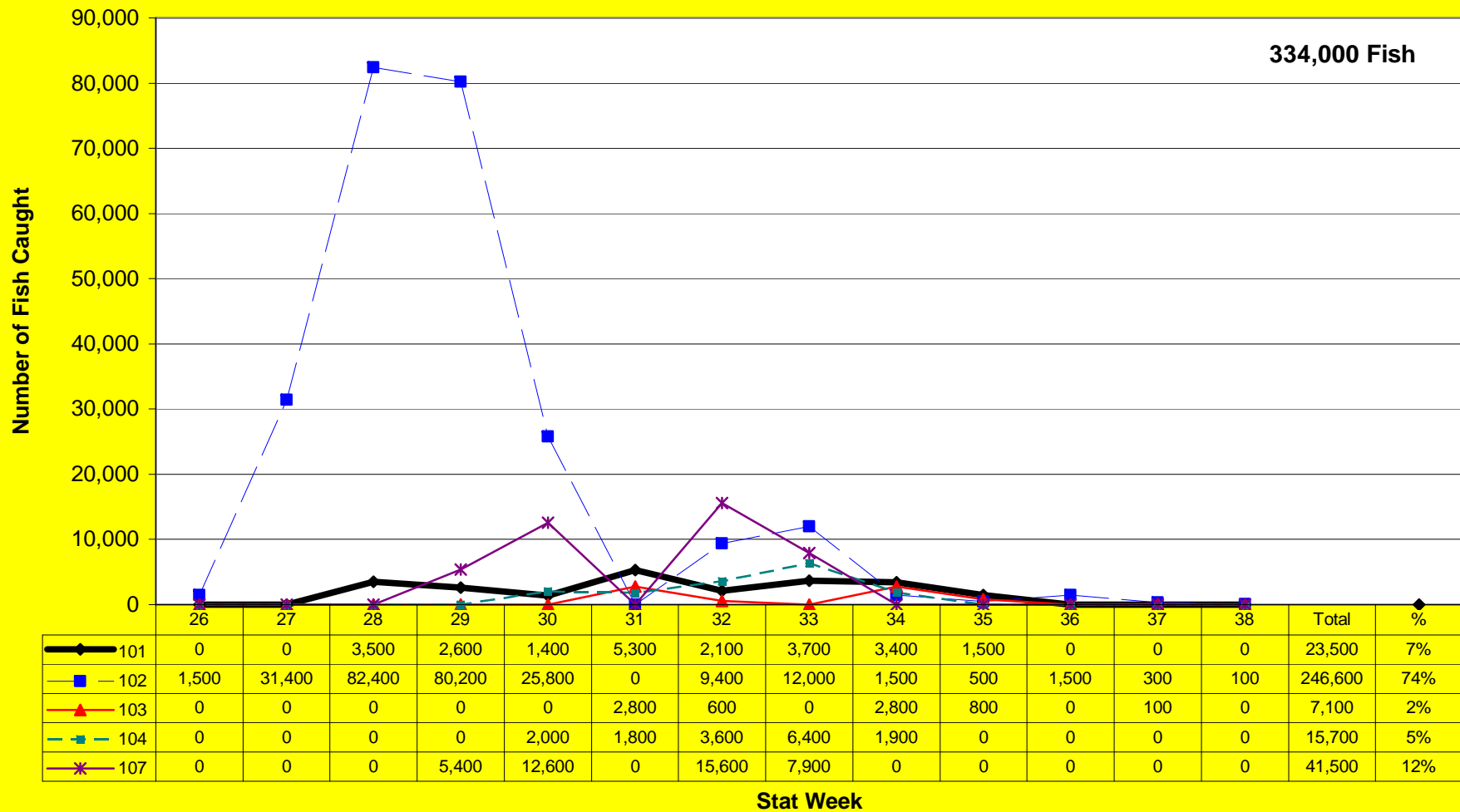
Sockeye Release Site	Common Property			Sport	Special Harvest Area			SSRAA Brood	Cost Recovery	Other	Total
	Gillnet	Seine	Troll		Gillnet	Seine	Troll				
BURNETT INLET	650										650
NECK LAKE	1840							50			1890
<b>Total</b>	<b>2490</b>							<b>50</b>			<b>2540</b>

# Chum Details

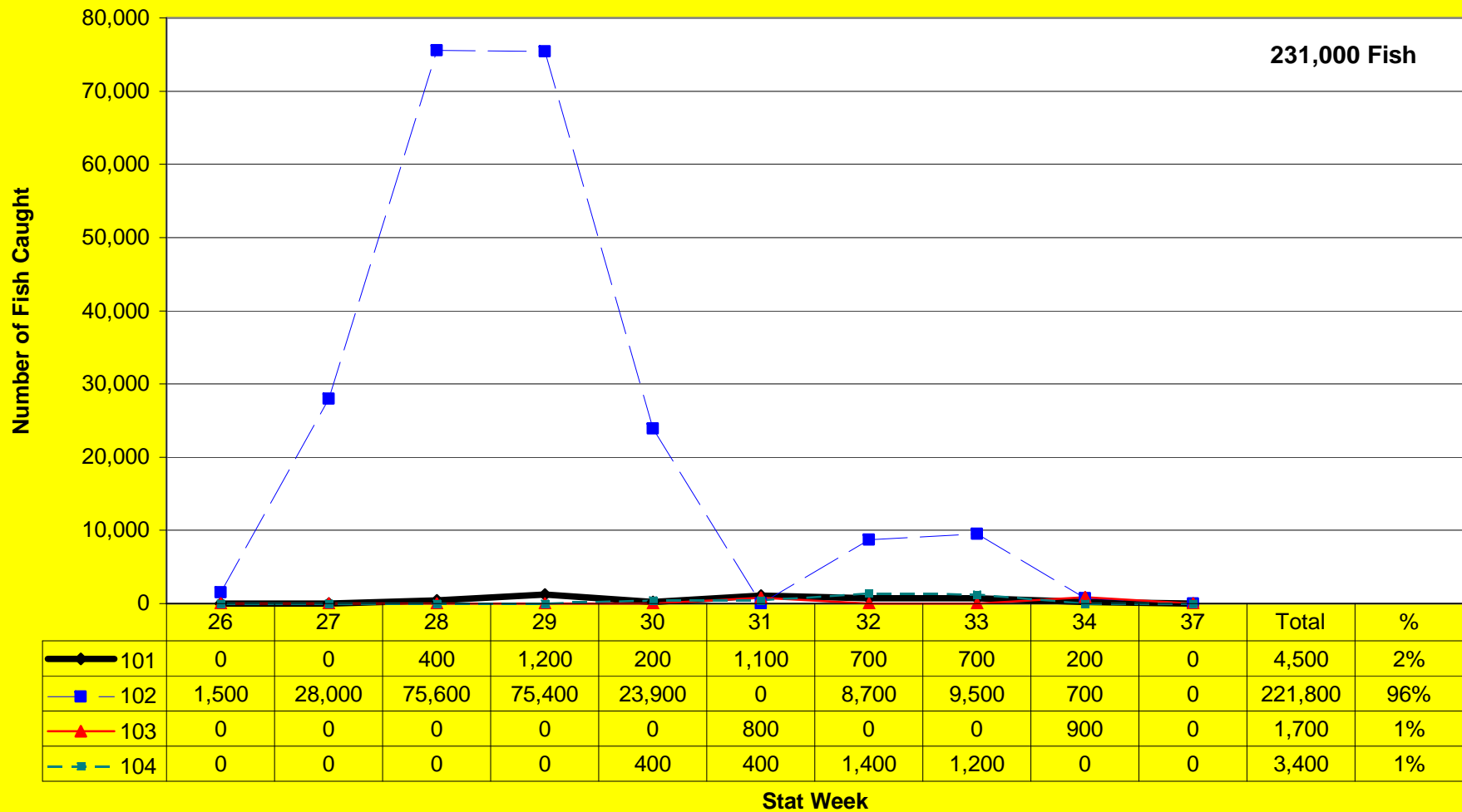
# 2008 SSRAA Chum Contribution – Common Property



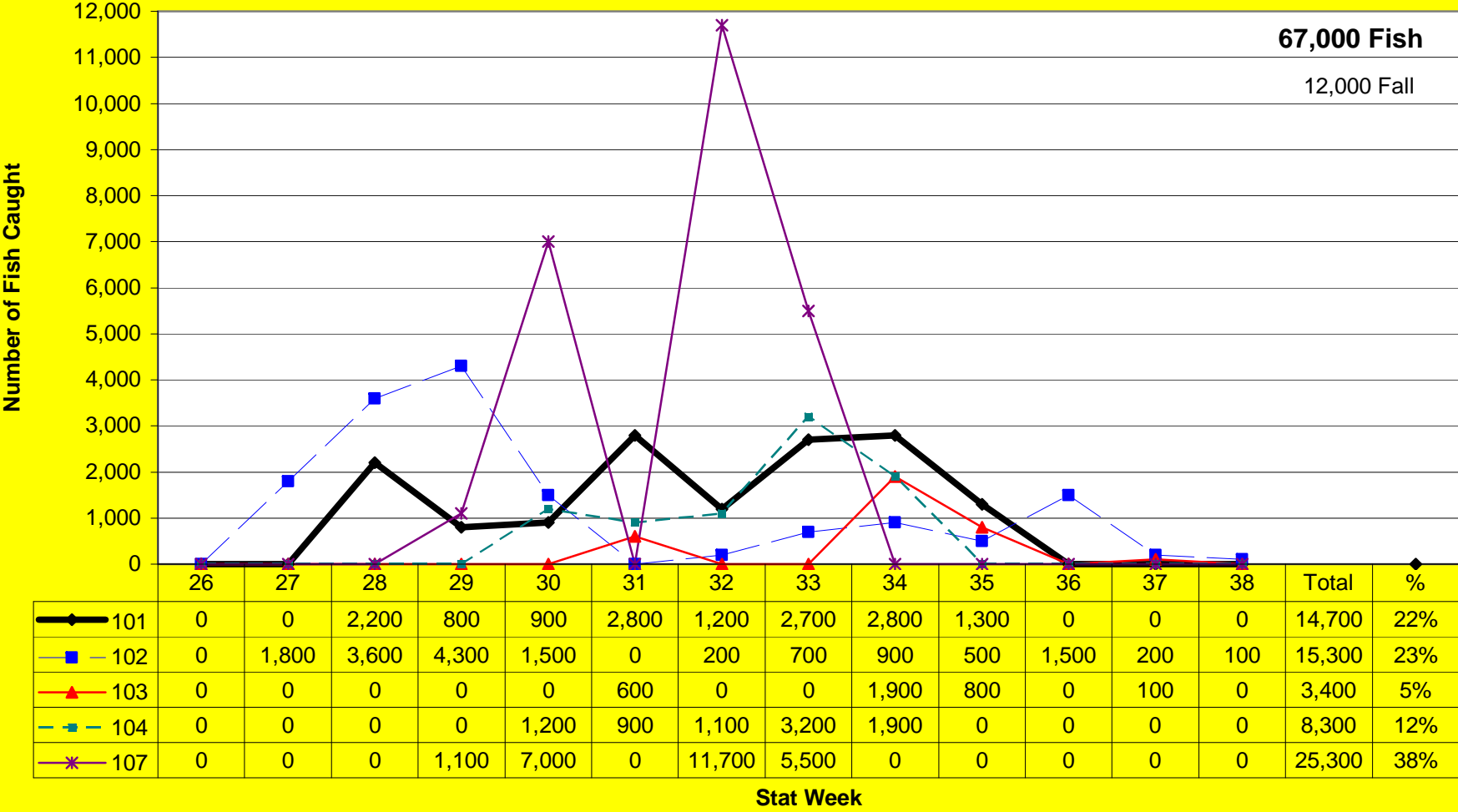
# 2008 SSRAA Chum Catch By District – Seine



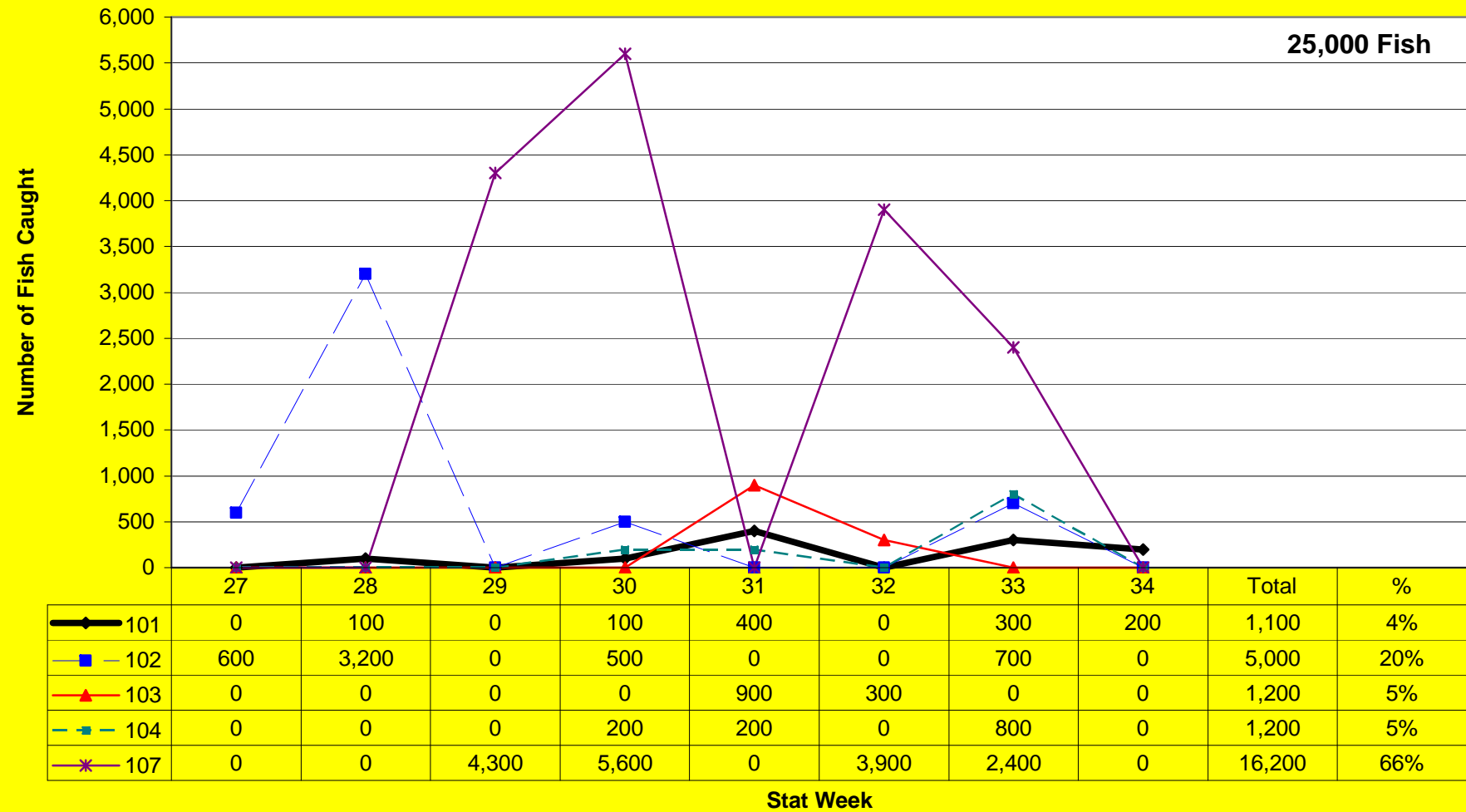
# 2008 Seine Catch – Kendrick Release - Chum



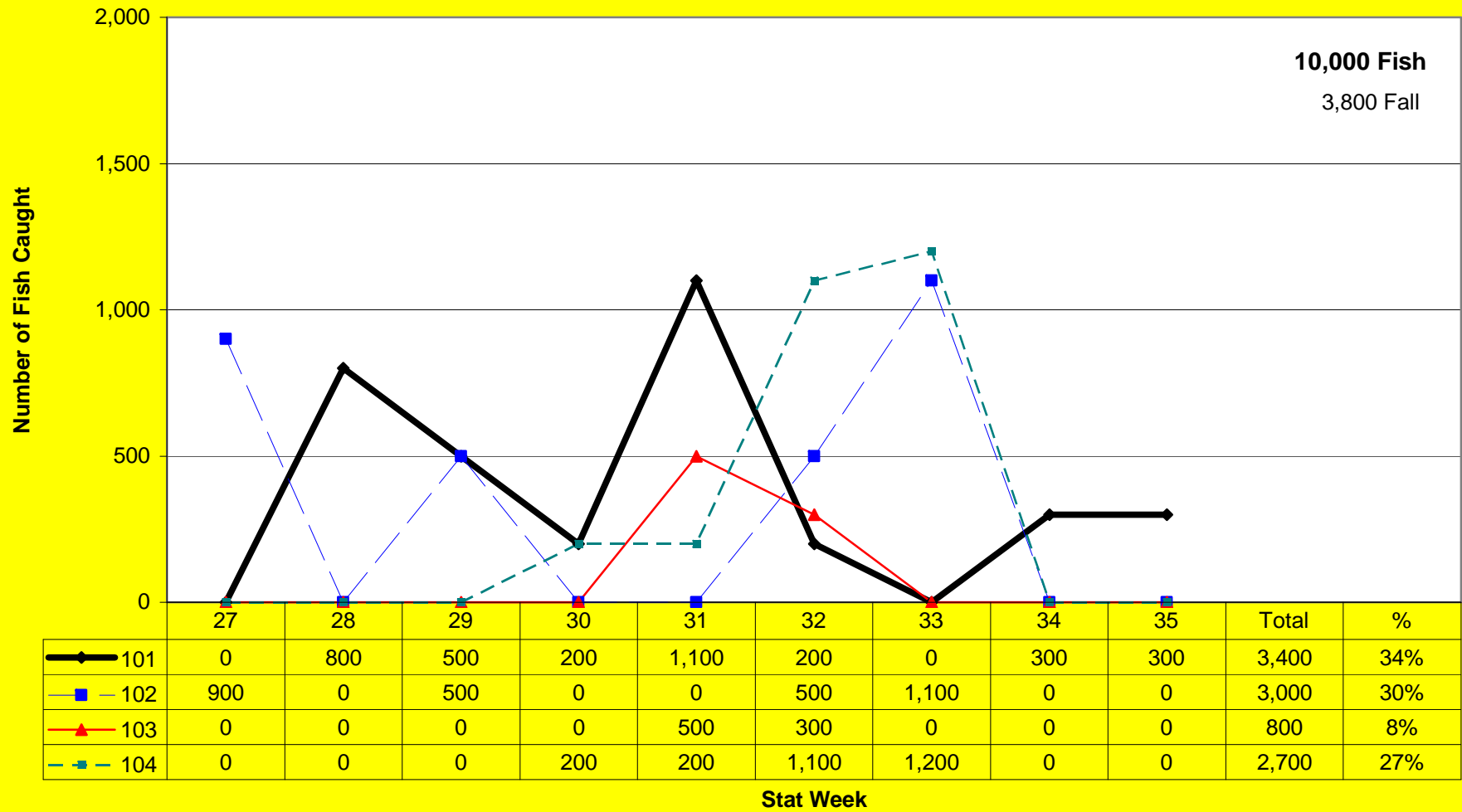
# 2008 Seine Catch – Neets Bay Release - Chum



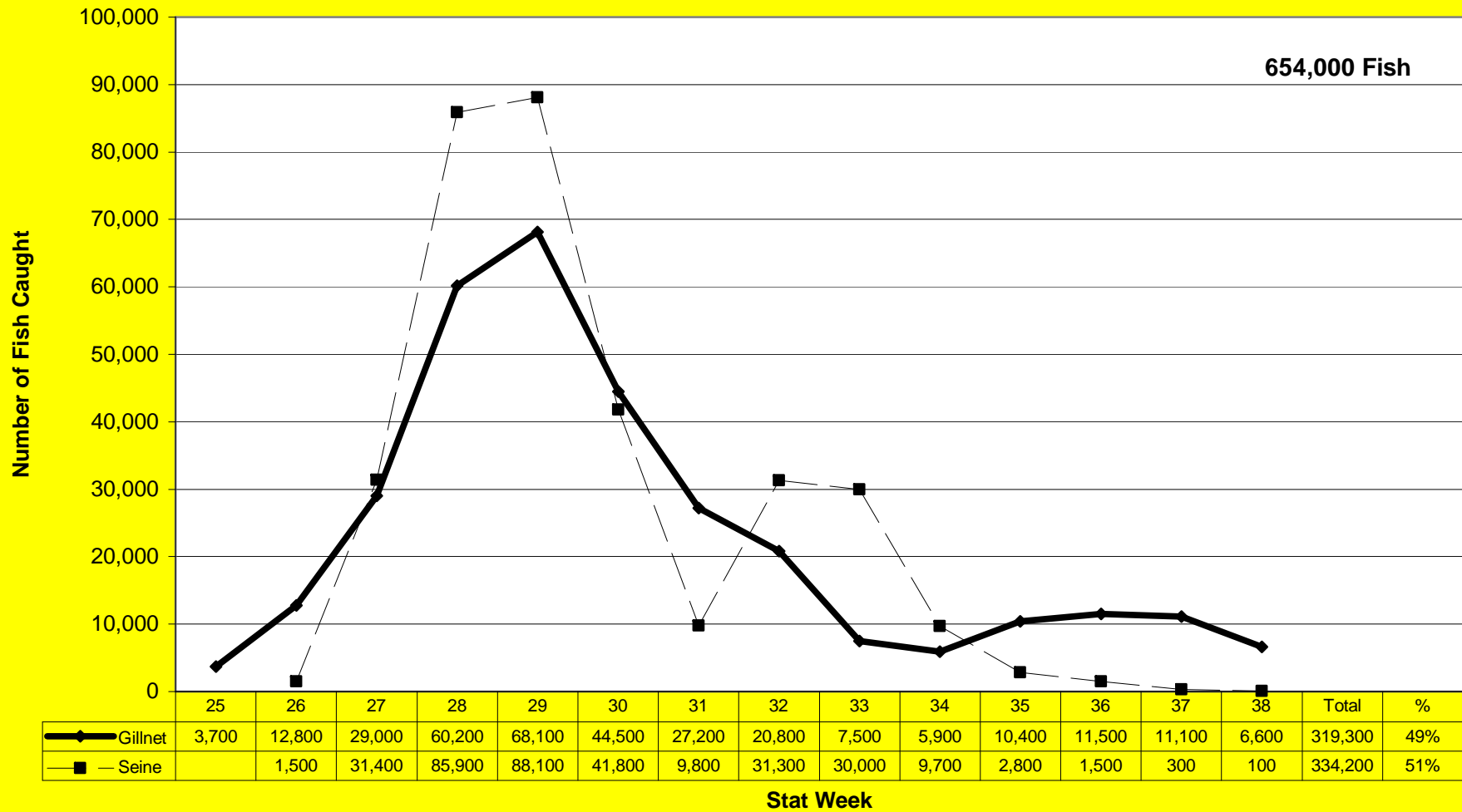
# 2008 Seine Catch – Anita Release - Chum



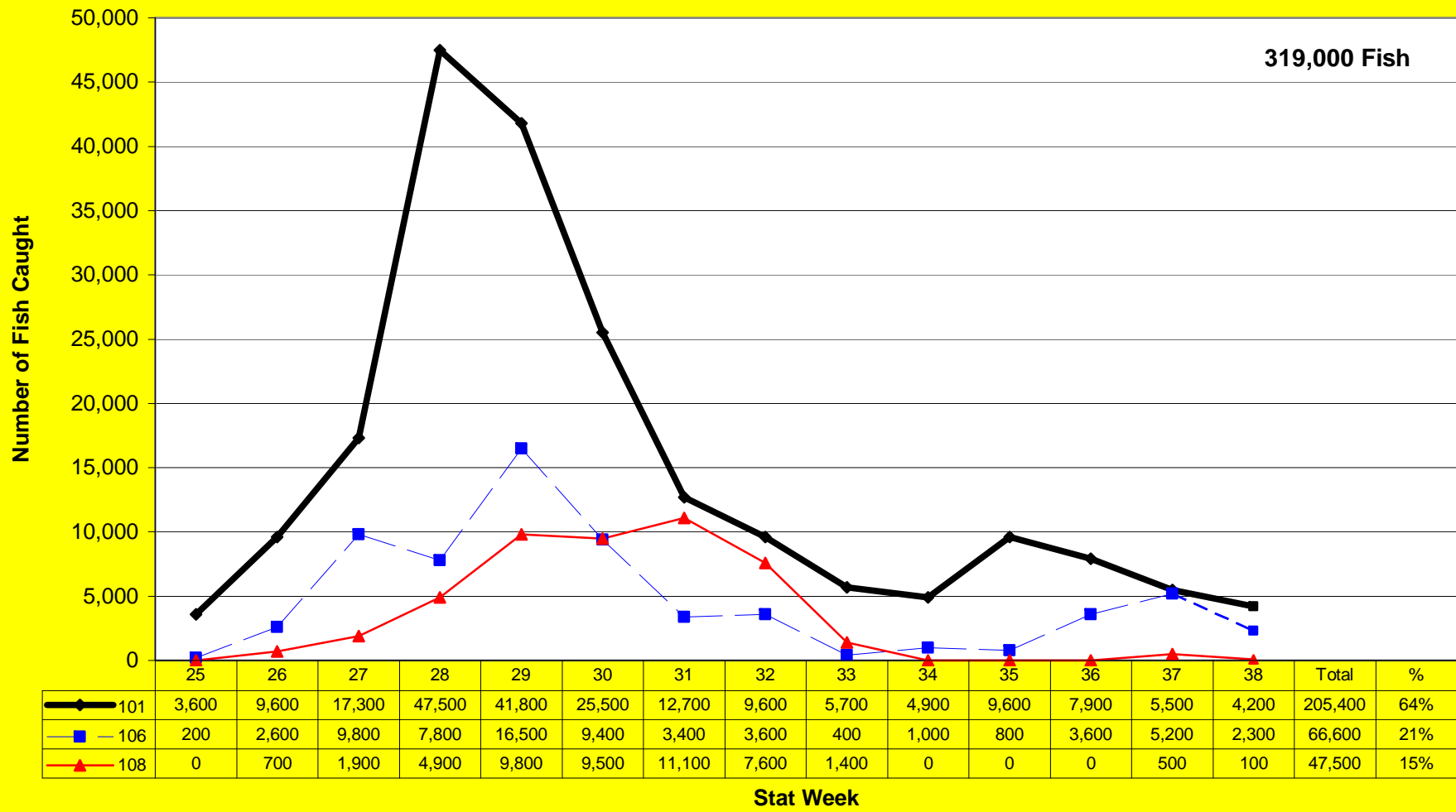
# 2008 Seine Catch – Nakat Release - Chum



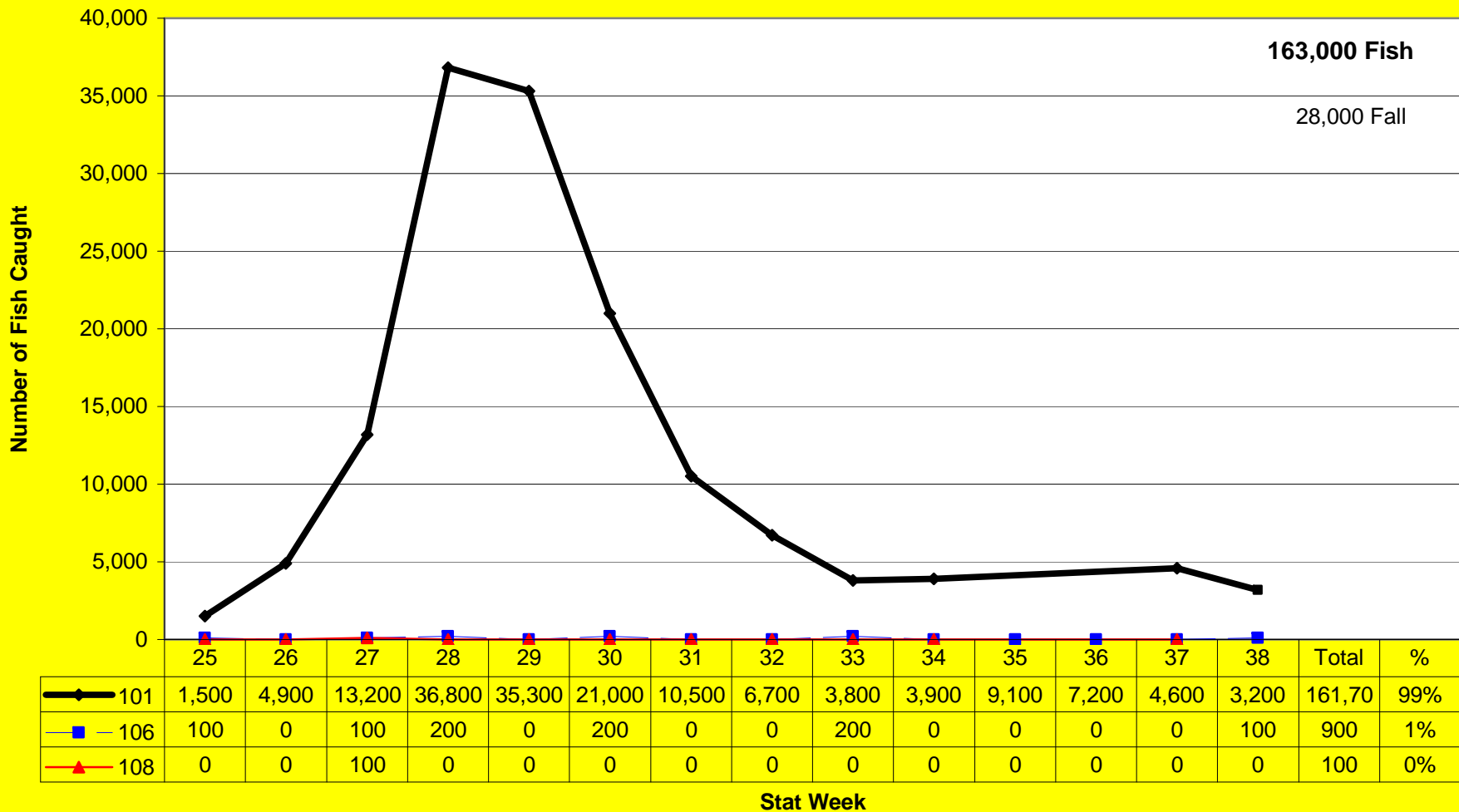
# 2008 SSRAA Chum Contribution – Common Property



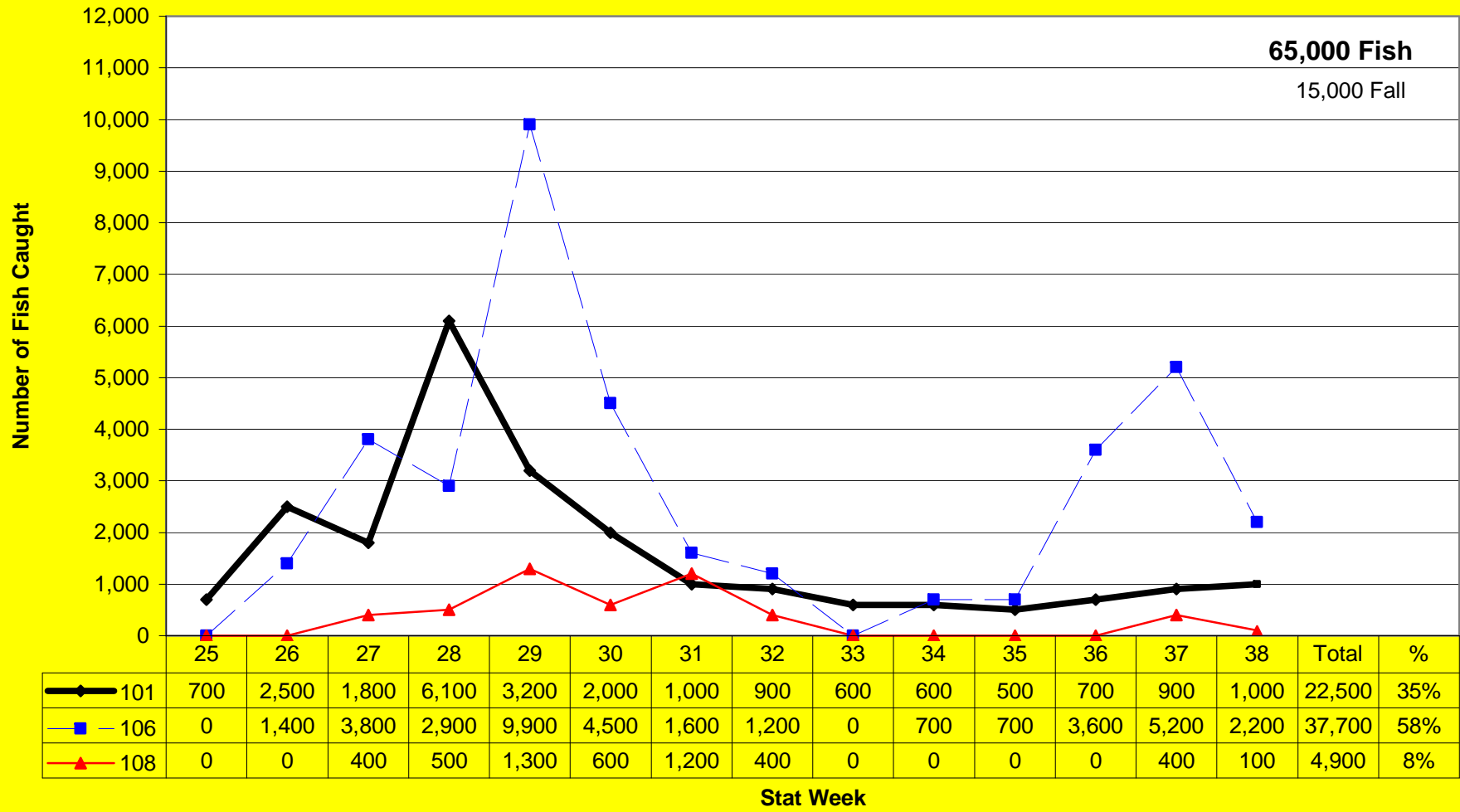
# 2008 SSRAA Chum Catch By District – Gillnet



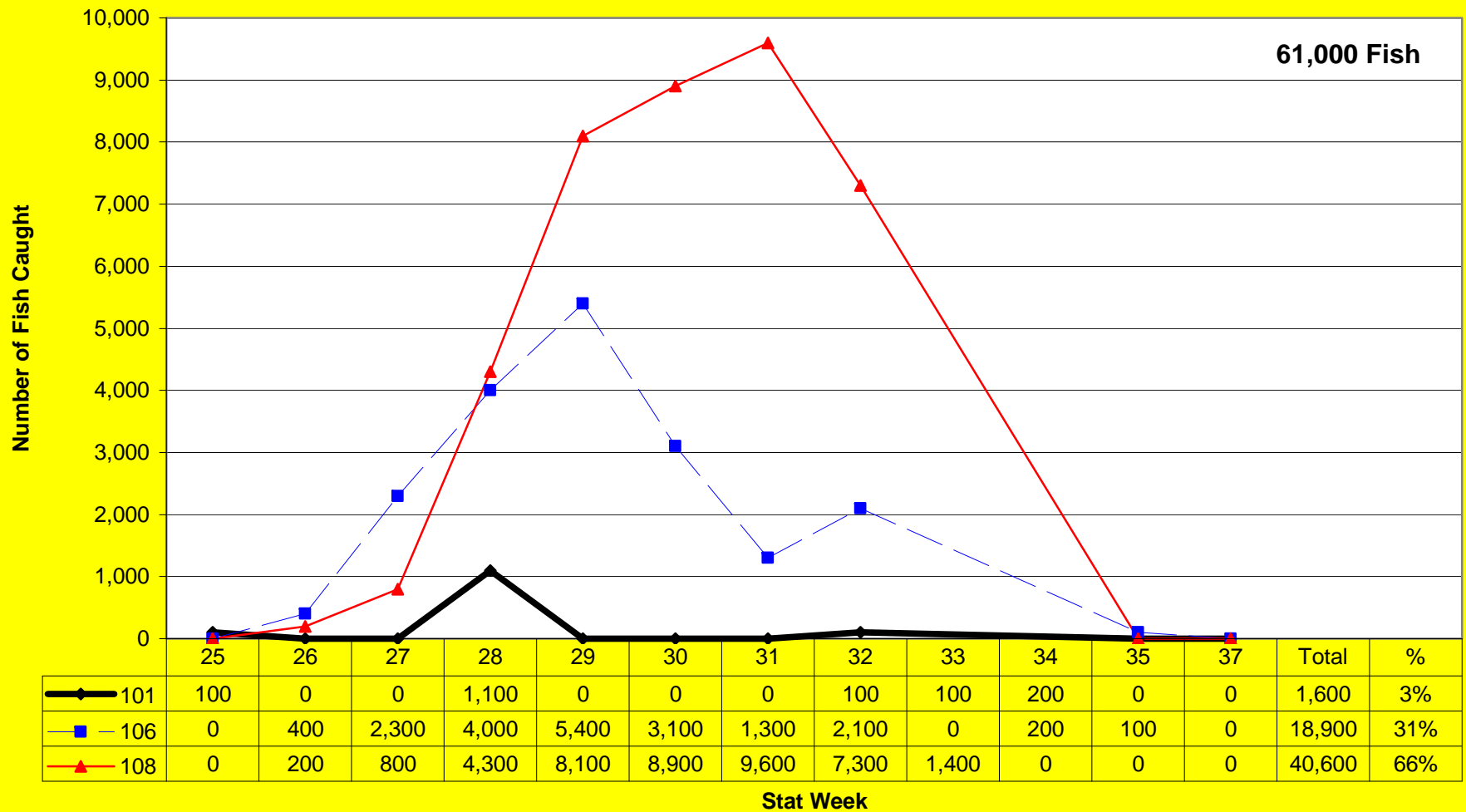
# 2008 Gillnet Catch – Nakat Release - Chum



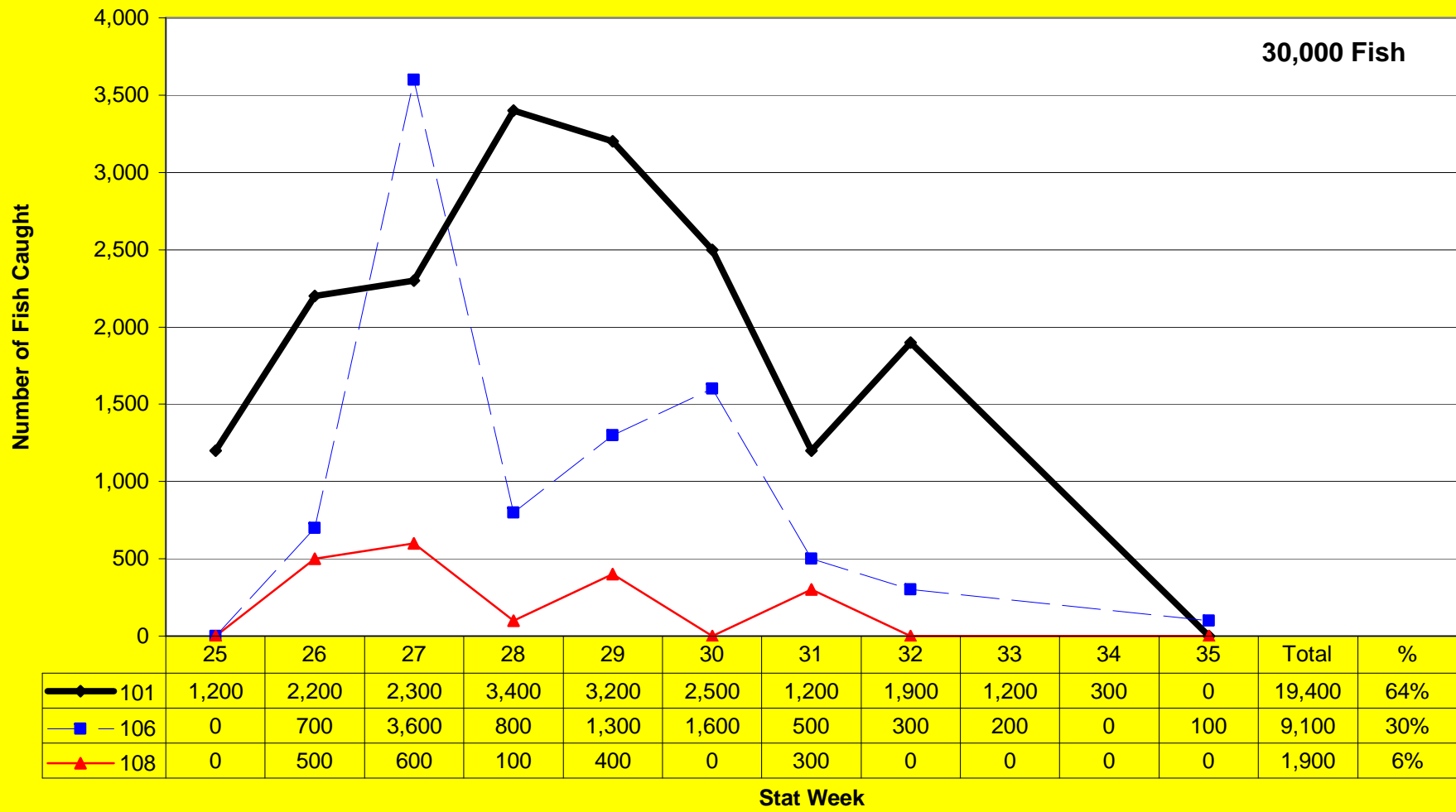
# 2008 Gillnet Catch – Neets Bay Release - Chum



# 2008 Gillnet Catch – Anita Release - Chum



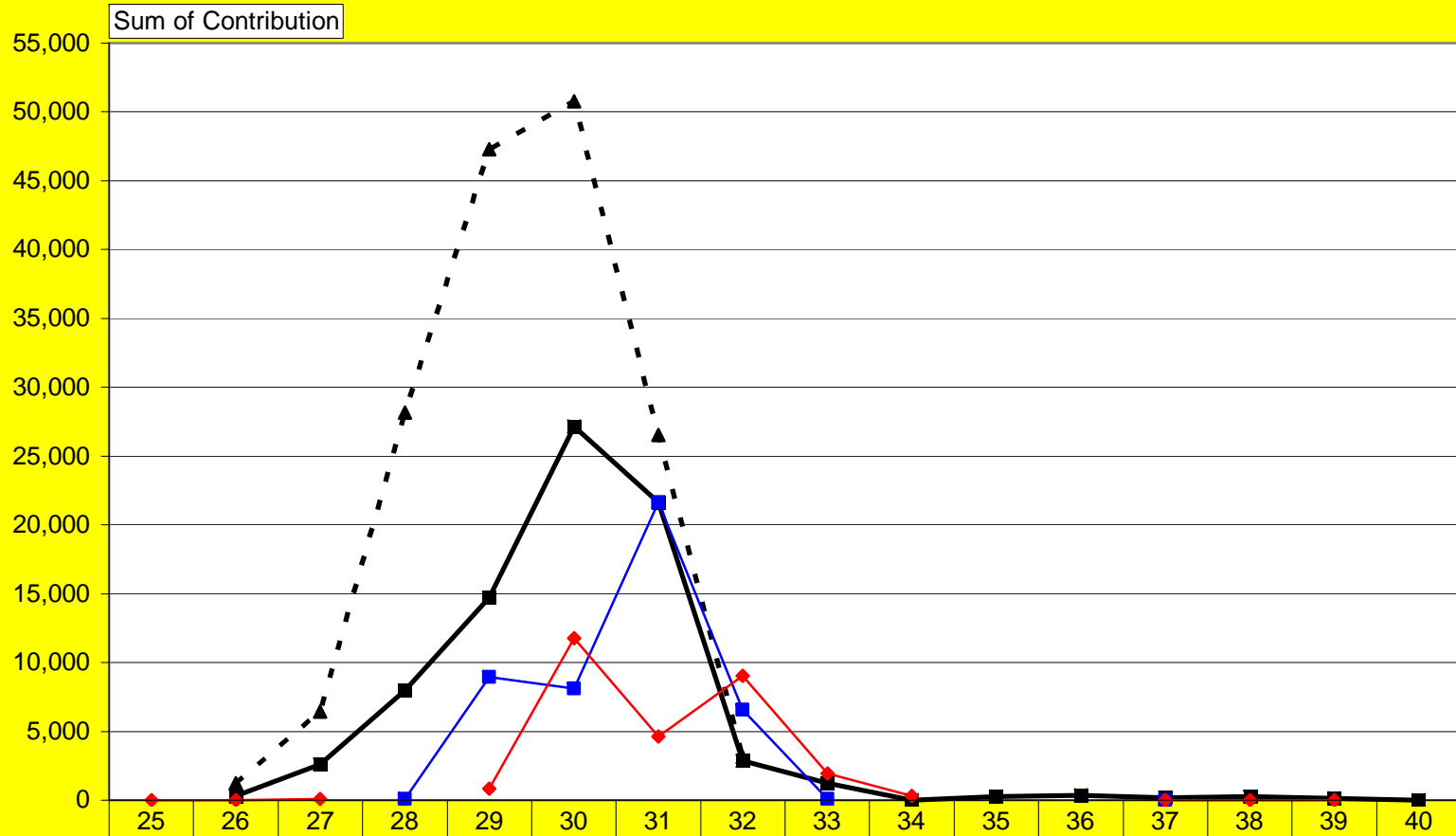
# 2008 Gillnet Catch – Kendrick Release - Chum



# Special Harvest Areas

# 2008 SHA Contribution SSRAA Chum

Year|2008|Type|SHA



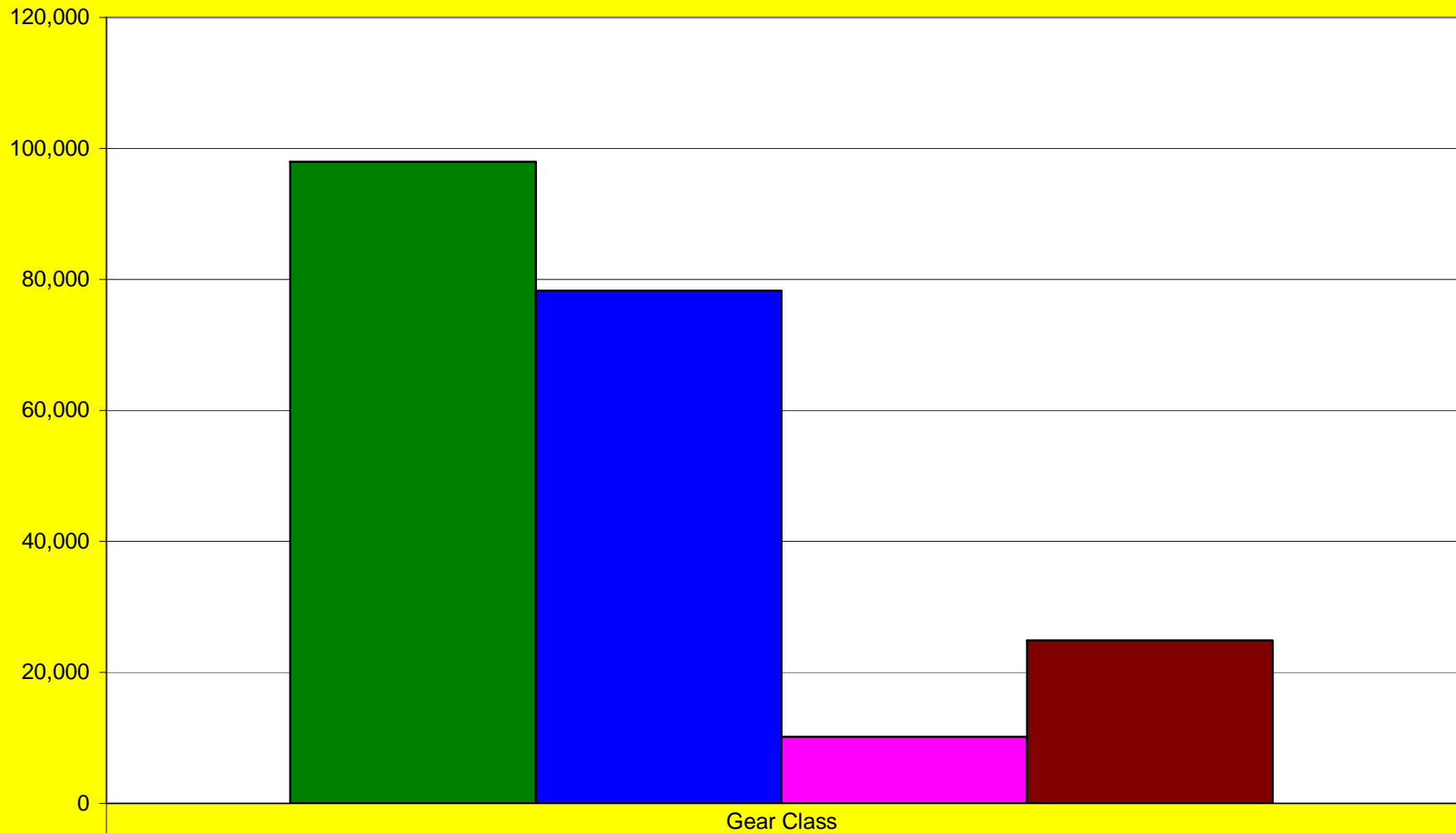
Site

- ▲ - Kenrick Seine		1,240	6,440	28,150	47,300	50,790	26,510	3,150							
—■— Nakat Drift		310	2,620	7,980	14,720	27,160	21,640	2,870	1,220	10	260	340	160	270	150
—■— Anita Seine				70	8,950	8,130	21,630	6,550	70				0		
—◆— Anita Drift	20	0	70		830	11,770	4,640	9,030	1,960	310			10	10	0

Stat Week

Coho

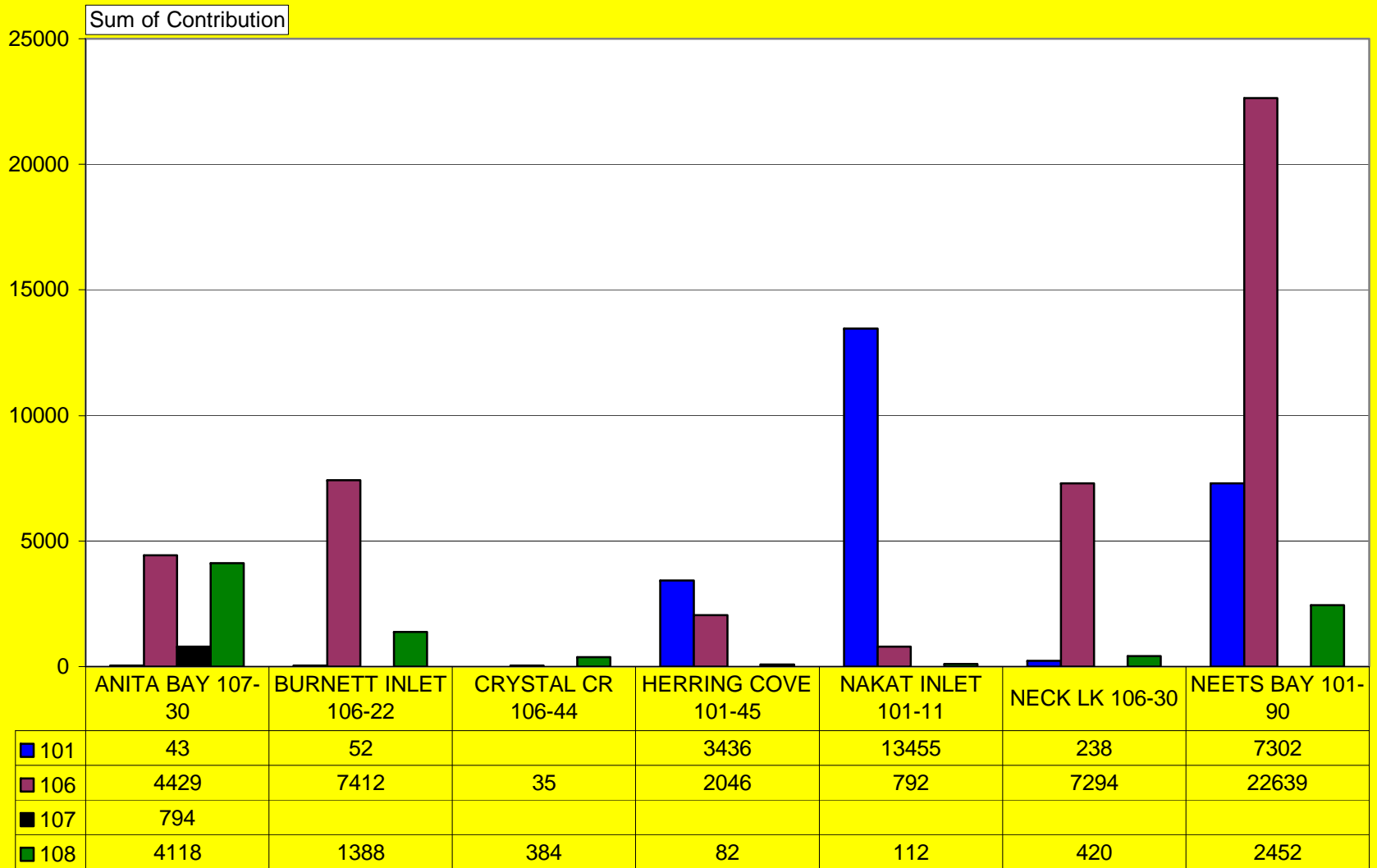
# 2008 Coho Contribution For SSRAA Releases



■ TROLL	98,000
■ DRIFT	78,300
■ PURSE	10,200
■ SPORT	24,900

# 2008 SSRAA Coho – Gillnet By Site and District

Quadrant (All) Stat Week (CWT) (All) Year 2008 Species COHO Gear Class DRIFT Source COM PROP

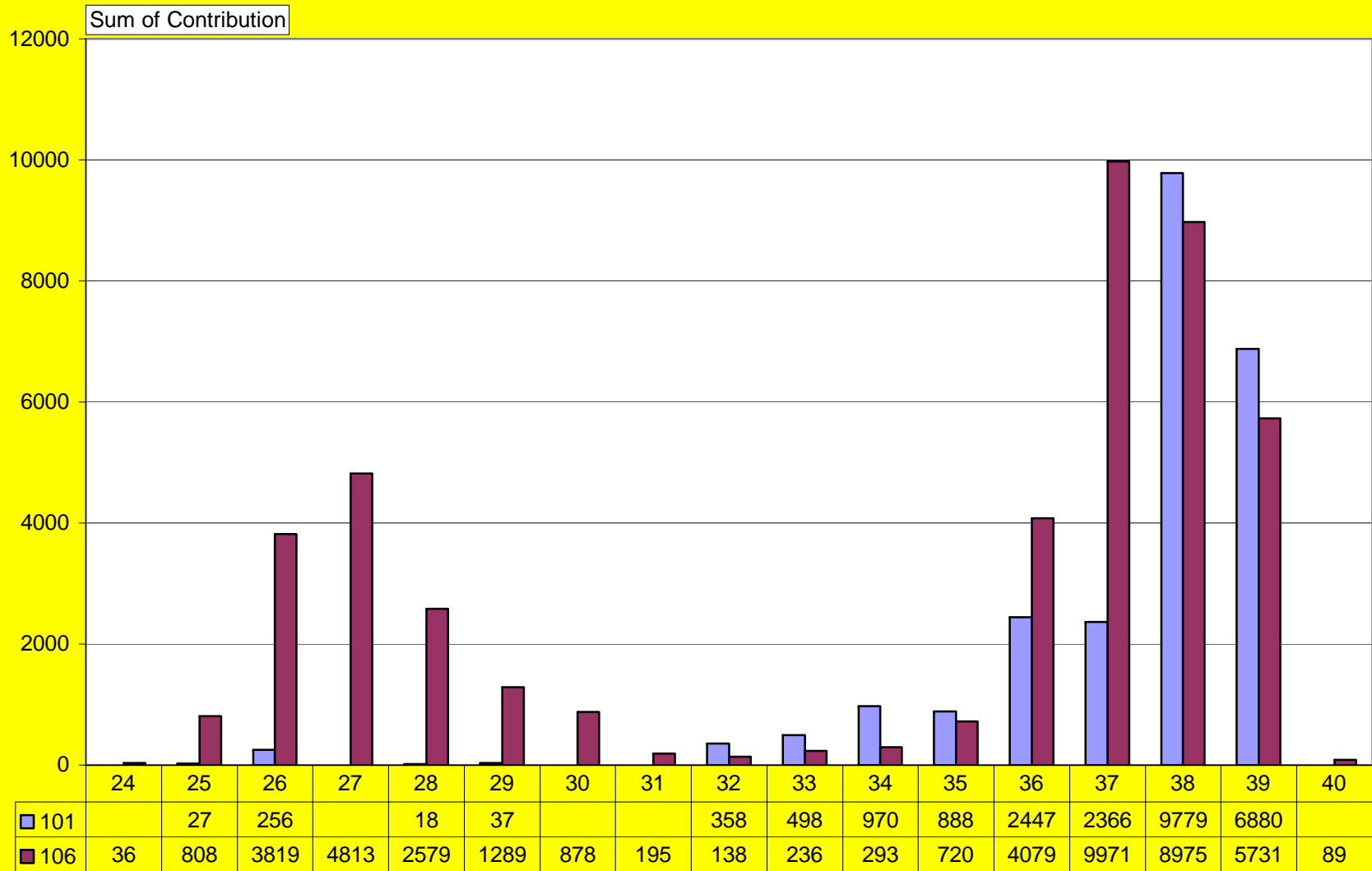


Site

District

# 2008 SSRAA Coho – Gillnet Timing

Site (All) | Quadrant (All) | Year 2008 | Species COHO | Gear Class DRIFT | Source COM PROP



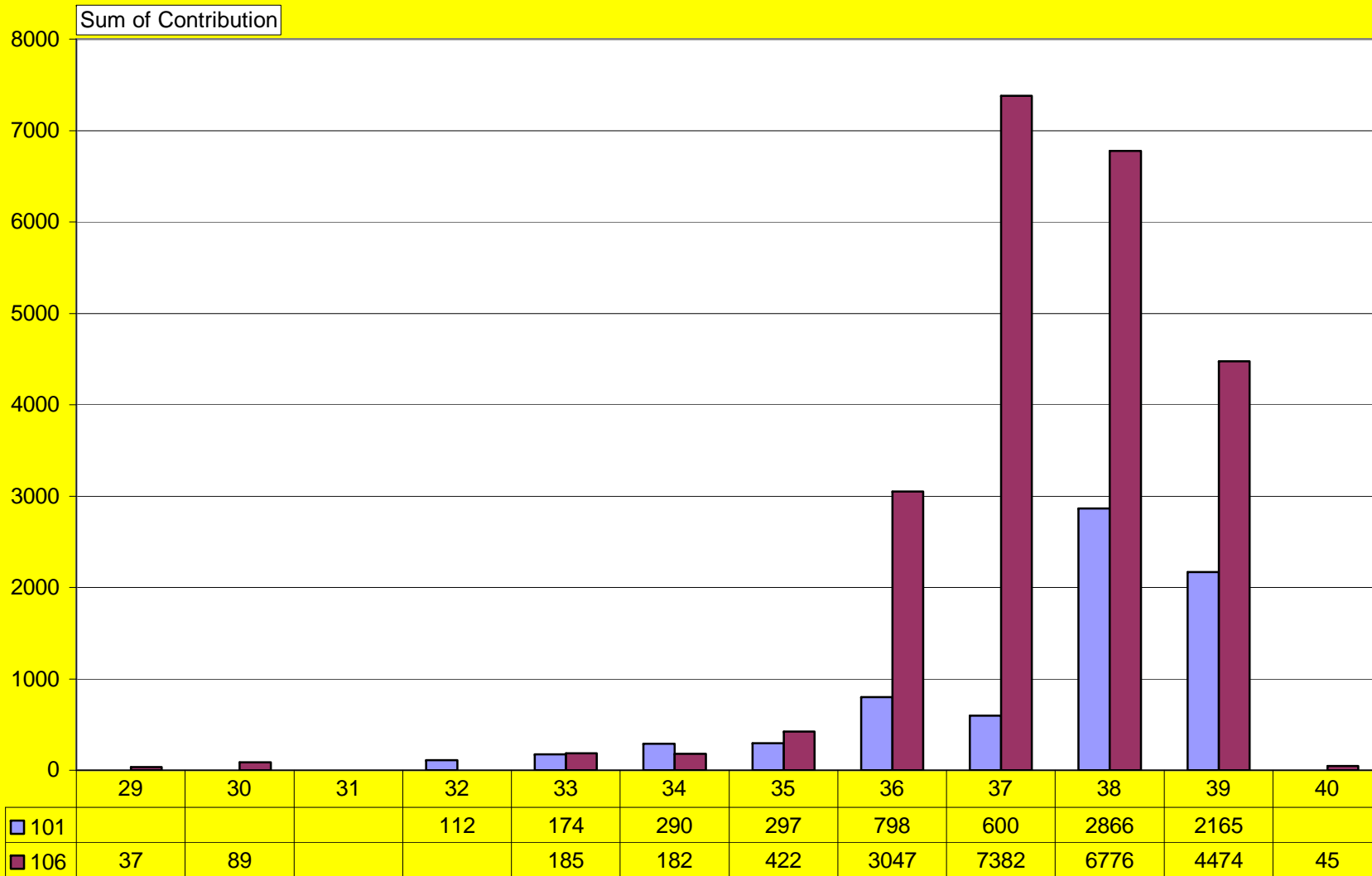
Stat Week (CWT)

District

Sum of Contribution

# 2008 SSRAA Neets Coho – Gillnet

Site|NEETS BAY 101-90|Quadrant|(All)|Year|2008|Species|COHO|Gear Class|DRIFT|Source|COM PROP

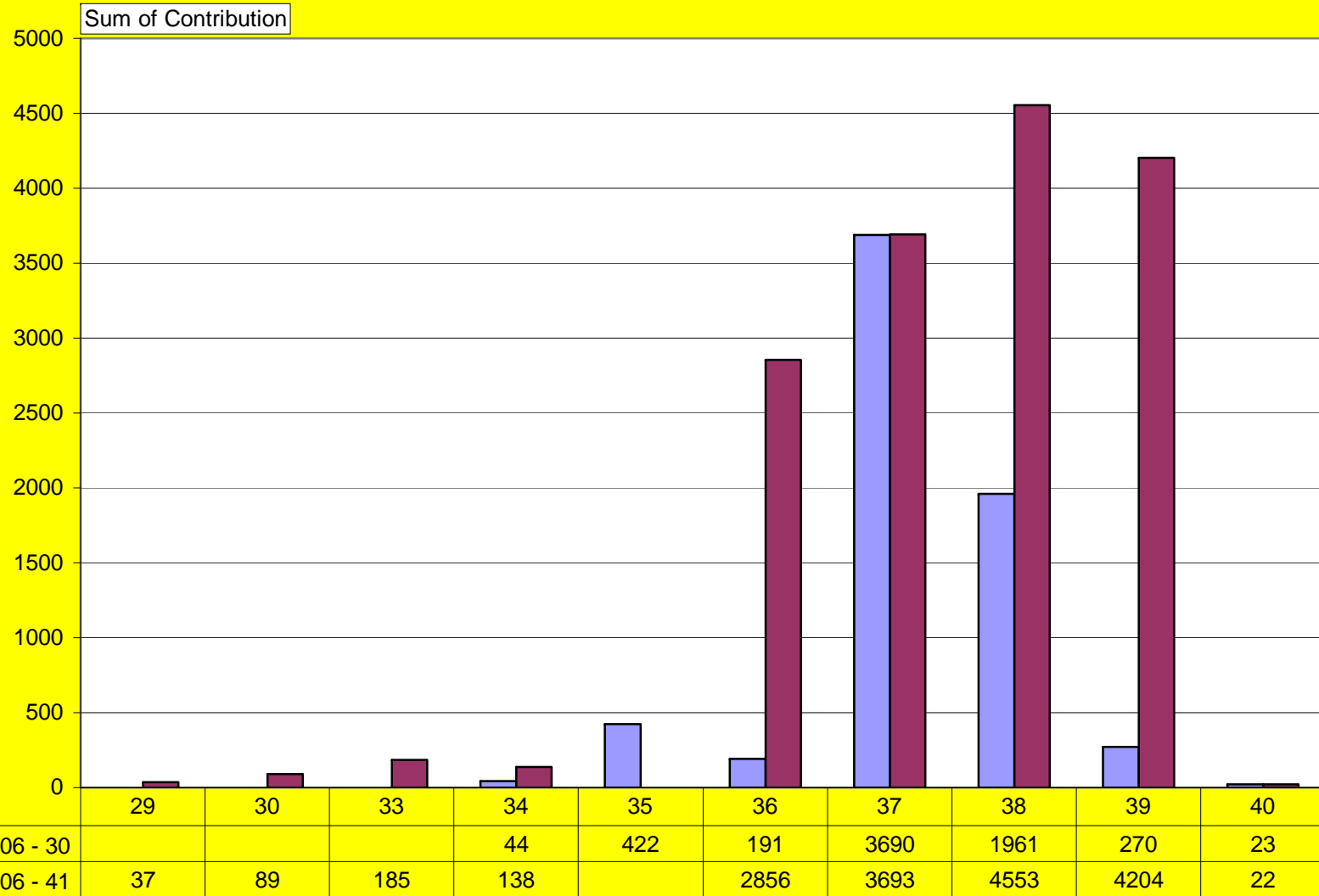


Stat Week (CWT)

District

# 2008 SSRAA Neets Coho – Gillnet 106

Site|NEETS BAY 101-90|Quadrant|(All)|Year|2008|Species|COHO|Gear Class|DRIFT|Source|COM PROP

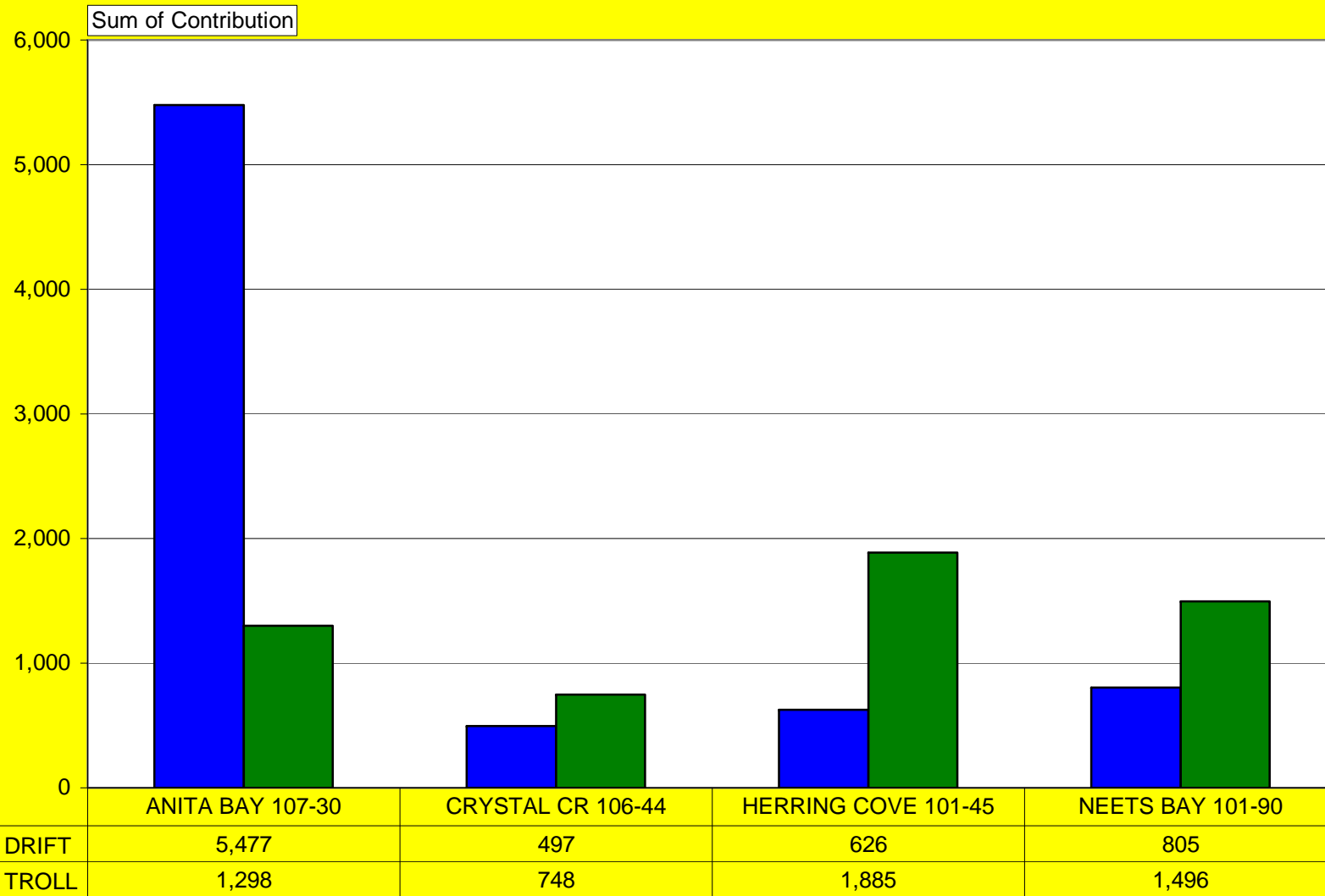


Stat Week (CWT)

Chinook

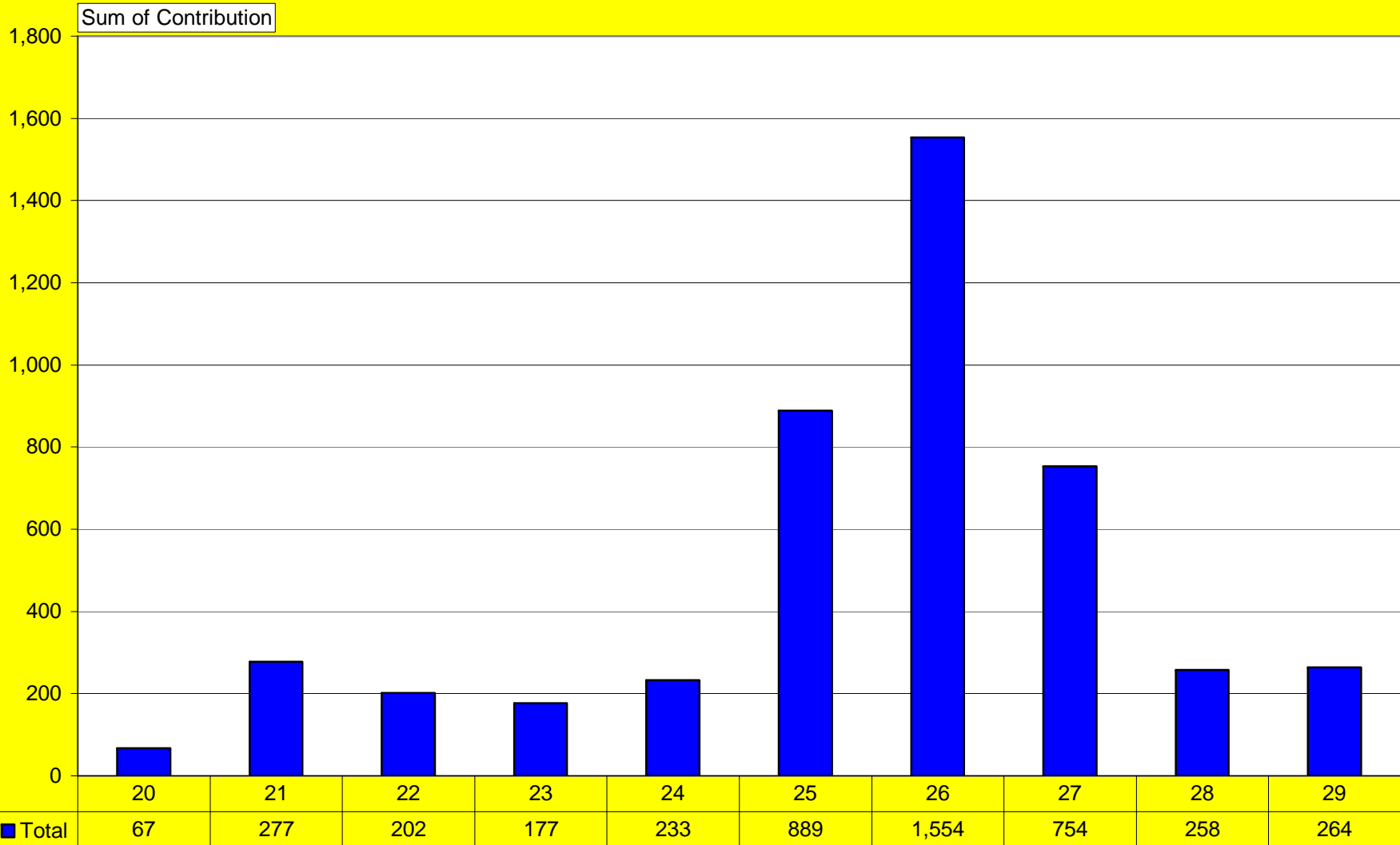
# 2008 SSRAA Chinook

Harvest (All) | Source | COM PROP | Species | CHIN | Year | 2008



Site

District 108 | Quadrant (All) | Site (All) | Gear Class DRIFT | Harvest (All) | Source COM PROP | Species CHIN | Year 2008



Stat Week (CWT)

# SSRAA 2009 Forecast All Species

## All Sites November 2008

Species	Site	5 YR	Method	4 YR	Method	3 YR	Method	CP	Terminal	Total
S Chum	Neets	80,000	RMR	1,350,000	RMR	185,000	RMR	323,000	1,292,000	1,615,000
S Chum	Nakat	10,000	HA	255,000	RMR	60,000	HA	208,000	117,000	325,000
S Chum	Anita	10,000	HA	350,000	RMR	65,000	HA	297,500	127,500	425,000
S Chum	Kendrick	26,000	HA	324,000	RMR	194,000	HA	380,800	163,200	544,000

F Chum	Neets	17,000	RMR	220,000	RMR	18,000	HA	51,000	204,000	255,000
F Chum	Nakat	4,000	SR+	0	RMR	10,000	HA	12,000	2,000	14,000

Species	Site	6 YR	Method	5 YR	Method	4 YR	Method	CP	Terminal	Total
Chinook	Whitman	600	SR+	9500	HA	7100	HA	6,900	10,300	17,200
Chinook	Neets	1000	SR+	13000	SR+	5000	SR+	5,000	14,000	19,000
Chinook	Anita	500	SR+	5200	HA+SR	4000	HA	5,820	3,880	9,700
Chinook	Crystal	1200	SR+	4900	HA	1400	HA	5,250	2,250	7,500

Species	Site	CP	Terminal	Total	Method
Coho	Whitman	17,500	7,500	25,000	HA
Coho	Neets	119,000	64,000	183,000	HA
Coho	Nakat	22,000	2,000	24,000	HA
Coho	Anita	14,000	3,500	17,500	HA
Coho	Neck	26,000	26,000	52,000	HA
Coho	Burnett	7,500	9,000	16,500	HA
Coho	Crystal	1,200	1,200	2,400	HA
Coho	Bakewell	24,000	10,000	34,000	HA

### Method -

RMR = Robust Multiple Regression

HA = Historical Average

SR+ = Sibling Return + Historical Age Of Return